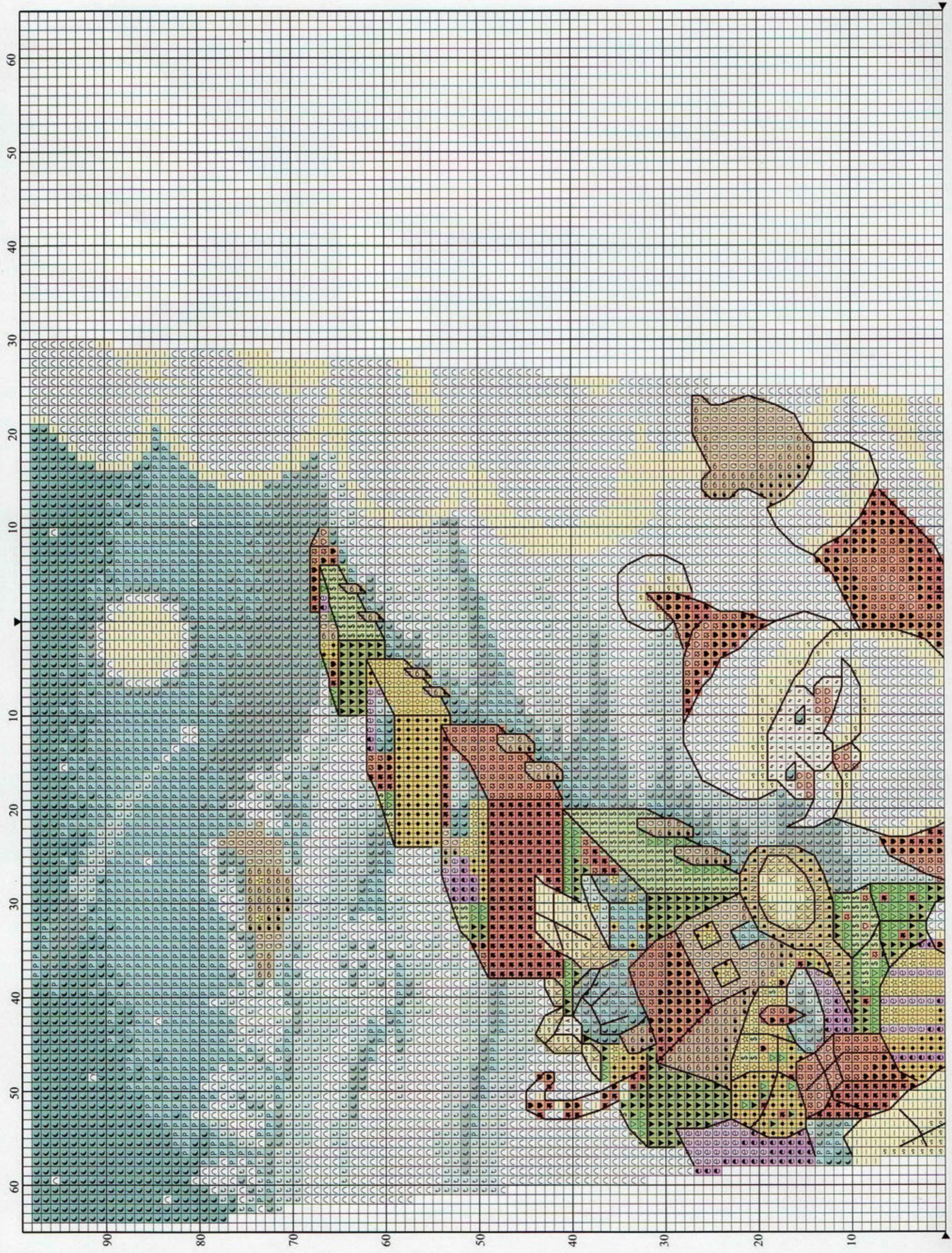
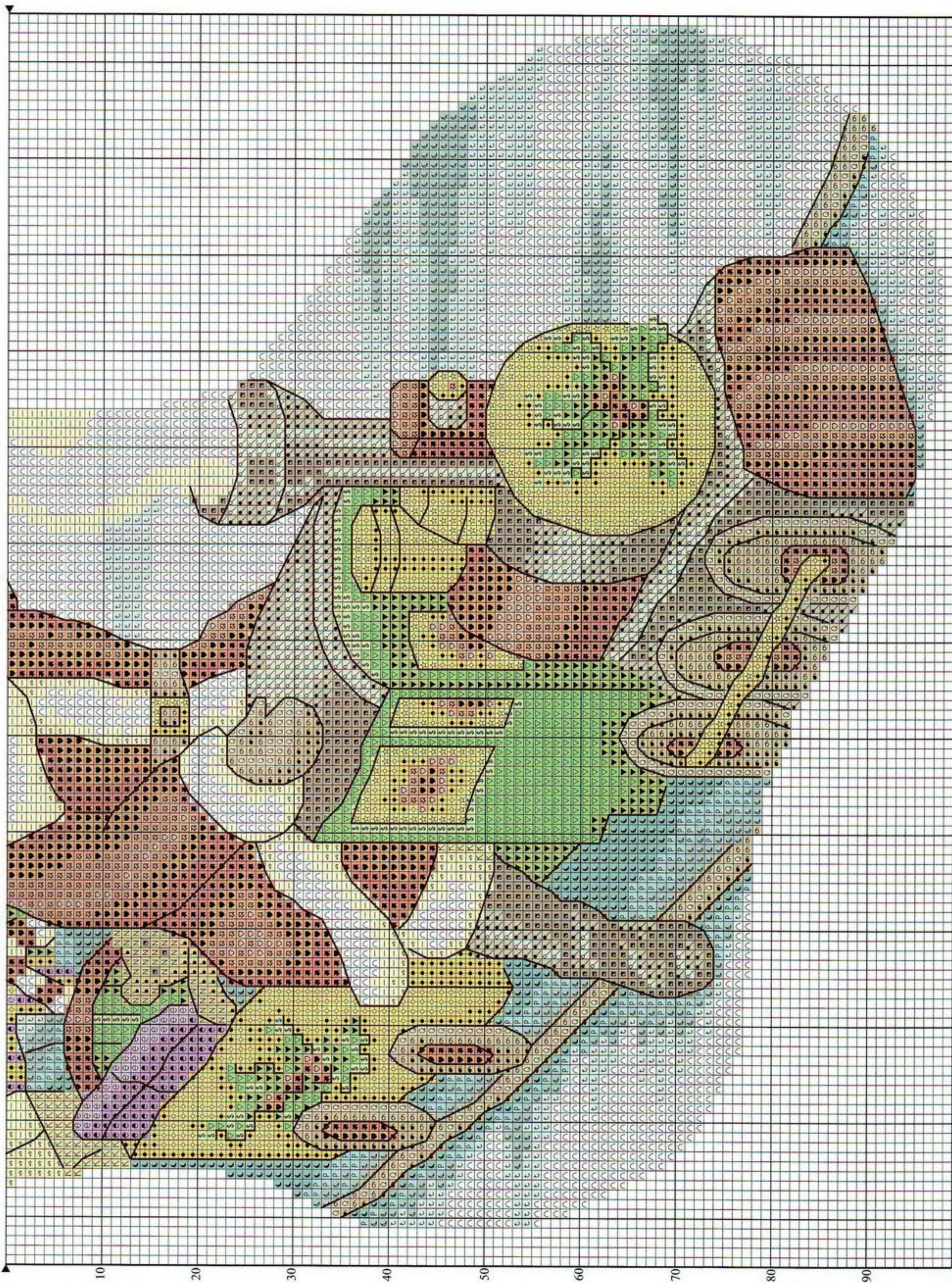
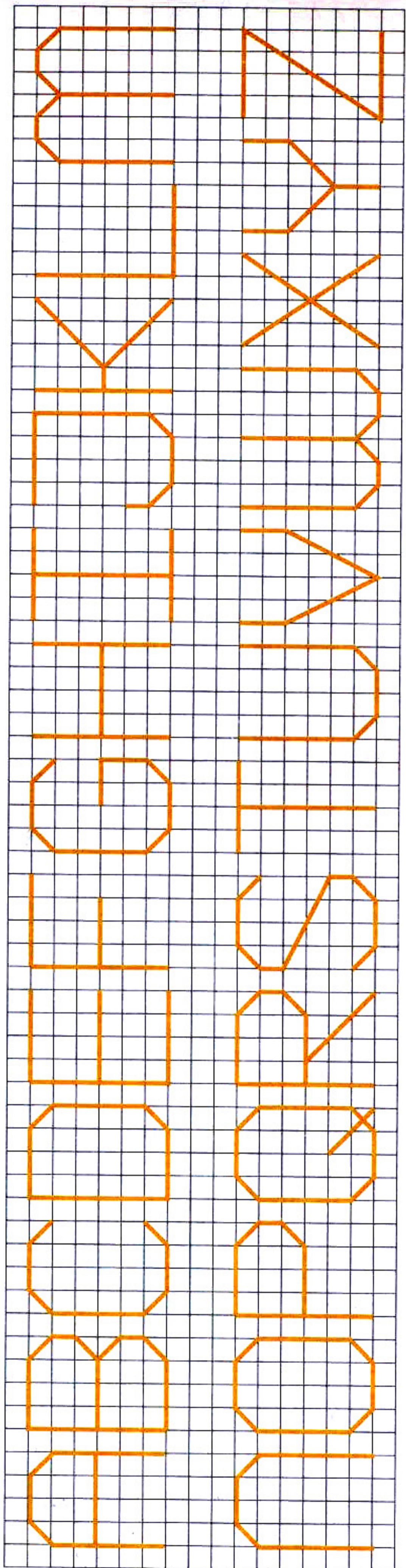




WWW.DECRUZ.ES







Christmas stocking key

	DMC	Anchor	Madeira	
* Cross stitch in two strands				
§	164	240	1209	light green
●	208	99	804	dark lilac
◐	209	98	803	lilac
♥	350	11	213	light red
☼	351	10	214	coral
♡	352	9	303	light coral
N	422	943	2102	light tan
●	646	8581	1812	grey
◐	647	1040	1813	light grey
K	676	891	2208	sand
s	677	886	2207	light sand
—	746	275	2511	cream
P	807	168	1108	blue
➤	817	13	210	red
●	840	1084	1912	brown
◐	841	1082	1911	light brown
Q	842	1080	1910	beige
◼	844	1041	1809	dark grey
A	948	892	306	peach
◐	950	4146	2309	light peach
▼	987	244	1403	dark green
▽	988	243	1402	green
t	3761	928	1001	light blue
☾	3765	169	2505	dark blue
☾	3766	167	1109	light blue
●	3820	306	2509	dark gold
○	3821	305	2514	gold
☆	3822	295	2510	light gold
●	3828	373	2103	tan
* Cross stitch in two strands DMC Light Effects				
∩	E5200			white (x3)
* Backstitch in one strand				
—	844	1041	1809	dark grey <i>all backstitch</i>

Stitch count 196 high x 128 wide

Design area 14 HPI (28-count evenweave) – 35.5 x 23.5cm (14 x 9¼in)
This design was stitched using DMC stranded cotton and DMC Light Effects