

*In Full Glory*



Reward of Merit  
Pinkeep

*Blackbird Designs*

# In Full Glory

Reward of Merit - Pinkeep

Designed and stitched by Barb Adams

## Symbols

- ♥ CC Used Brick (DMC 3857/356)
- x GA Burlap (DMC 610/611)
- GA Mountain Mist (DMC 3022/926)
- ☐ GA Portabella (DMC 3790/648)
- GA Shaker White (DMC 3866)
- / GA Straw Bonnet (DMC 543)
- ◆ GA Tin Bucket (DMC 3787/924)
- GA Wood Trail (DMC 3031)

CC - Classic Colorworks

GA - Gentle Arts Sampler Threads

**Design Size:** 65W x 81H

**Fabric:** 30ct. Liberty Gathering Gray  
by R & R Reproductions

**Finished Size:** 5 3/8" x 6 3/8"

**Charting:** Sampler Graphics -  
Alissa Christianson

## Other supplies

- 1/4 yd. of lightweight fusible interfacing
- 8" square of fabric for the backing
- 1 yd. of 1/4" white cotton rick rack
- 1 bottle Rit liquid dye - tan
- 1 bottle Rit liquid dye - black
- Crushed walnut shells (bird or lizard litter  
found in pet stores)
- 3 vintage buttons

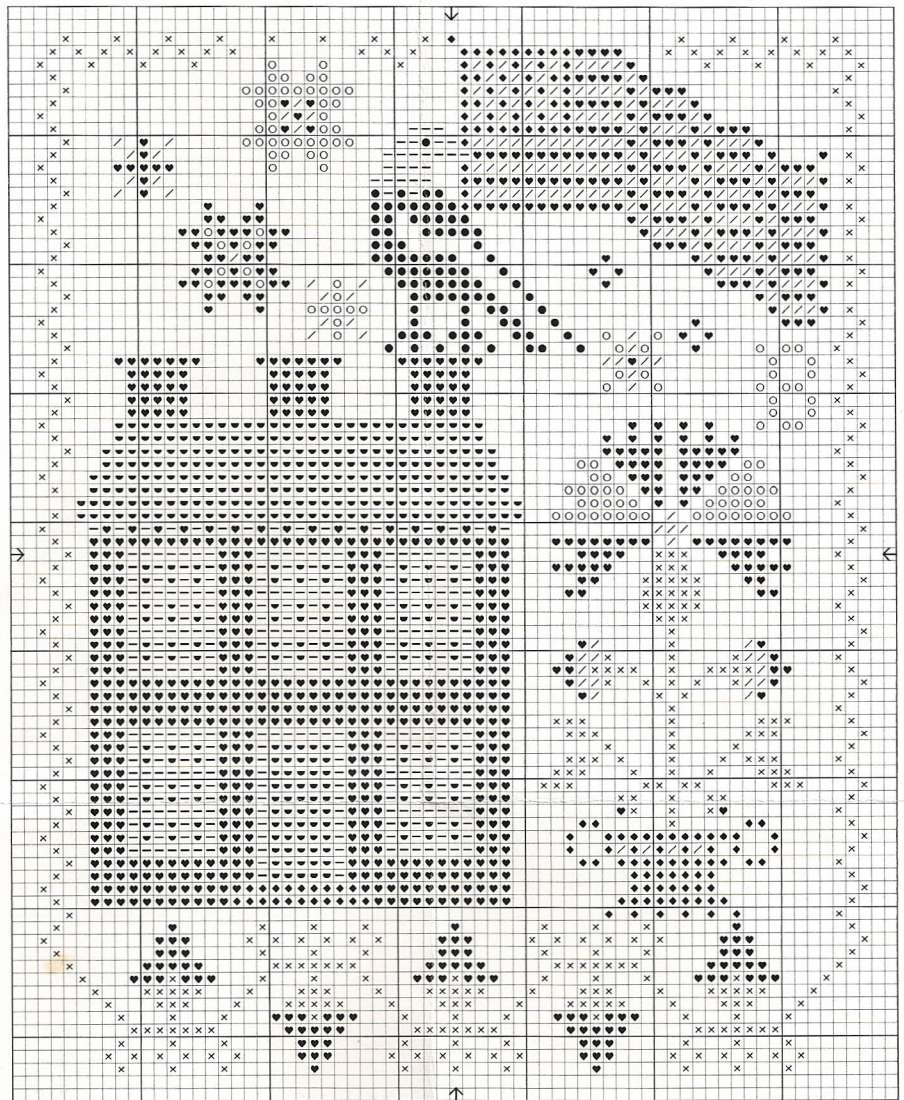
[www.blackbird-designs.com](http://www.blackbird-designs.com)

[www.blackbird-designs.blogspot.com](http://www.blackbird-designs.blogspot.com)

e-mail: [alma@blackbird-designs.com](mailto:alma@blackbird-designs.com)

913-681-3137

© Blackbird Designs 2014



## Instructions

- Cross stitch with 2 strands of floss over 2 linen threads.
- Use the alphabet provided on the reverse side and replace the letter "B" with your own initial or that of someone you hold dear.
- Trim 3/4" away from the stitched design on all 4 sides.
- Cut the fabric backing the same measurement as the linen.
- Cut 2 pieces of fusible interfacing the same measurement as the linen. Iron one piece onto the reverse side of the backing and the other to the reverse side the linen.
- Sew the linen front to the fabric backing, right sides together. Use 1/4" seam allowance. Leave a small opening on the bottom seam for turning.
- Turn to the right side. Position and sew the three buttons in place.

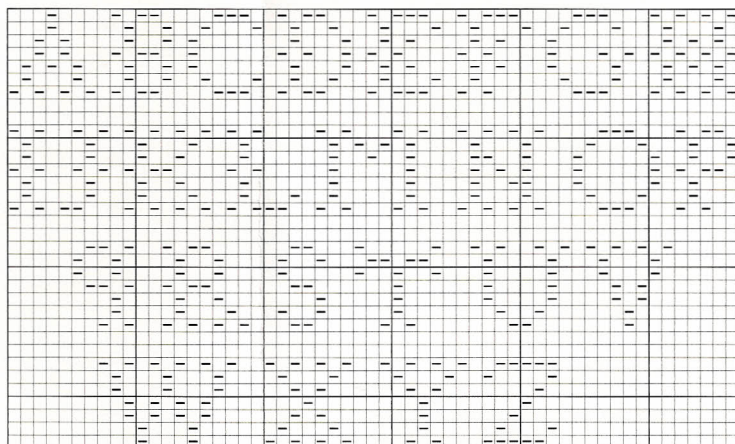
The remainder of the instructions follow on the reverse side.

## Instructions continued

- Stuff with crushed walnut shells. Blind stitch the opening closed.
- Dye the trim. Refer to the dyeing instructions below.
- Couch the trim in place over the seam line. Apply a light dot of glue to each cut end of the rick rack to prevent fraying. Tuck one end under the other and couch them in place.

### Dyeing Instructions

- Mix the following in a glass jar. (Spaghetti sauce jars work well for this.)
  - 2 cups of hot water
  - 1 tablespoon of liquid tan dye
  - 1 tablespoon of liquid black dye
- Add the rick rack to the mixture. Mix well. Let it set until the color looks right. The trim will dry lighter than it appears when wet. Air dry and press if needed.



Alphabet to personalize your sampler.